

Directions

You will need:

1. A large, clean pizza box
2. 1/2 yard of yellow felt
3. White craft glue
4. Glue stick
5. Good quality laser printer paper
6. Enough felt scraps to back all the characters and props
7. Construction paper

For the "set":

Measure the inside cover of the pizza box and cut a piece of yellow felt to fit it. Glue the felt in place. Glue the Letter TV logo in the upper right-hand corner of the yellow felt. Decorate the outside of the box with construction paper. Glue the Letter TV felt box label on the spine of the box. Use the box to store felt pieces and the yellow felt covered lid as the set for playing with felt characters and props.

Print out the patterns for Letter TV characters and props onto good quality paper. Glue the paper to pieces of felt using a glue stick. Trim around the edges.

Use the remaining pieces of felt to cut out letters of the alphabet. Be sure to make upper- and lowercase letters.

Recommendations for using the felt board

The board is an excellent tool for reinforcing the lessons presented on the Letter TV programs. Teachers can ask students to sound out words that are used in the program and use the props and the letters to spell them on the felt board.

Select a Letter TV character or prop and ask students to find the letter that starts the name of the character or item.

Play a game using a Letter TV character as the host. Place a character in the lower right-hand corner of the box. Give instructions as if they came from the character. Use the letters in the box as your game pieces. Here are three simple games to try:

- Match upper and lower case letters.
- Start with a word group like "op." See how many words you can create using one more letter.
- Put up a prop and part of its word, and invite students to finish spelling out the word.

Get students to sort pieces by sound, to practice phonemic awareness skills. Select a half-dozen or so props or characters, being careful to choose some that have the same desired sound. Place these on the board and invite students to say the words out loud and to keep the items on the board that have the same sound. This is an especially good activity to point out that c and k can represent the same sound, while and c and s represent the same sound at other times.

Many of the Letter TV programs have story lines similar to those in classical children's literature. For instance, "H" follows a story line similar to "The Boy Who Cried Wolf." After reading "The Boy Who Cried Wolf" and watching episode "H," invite students to think of ways that the story might have turned out differently. Use the felt board to act out the new story line.

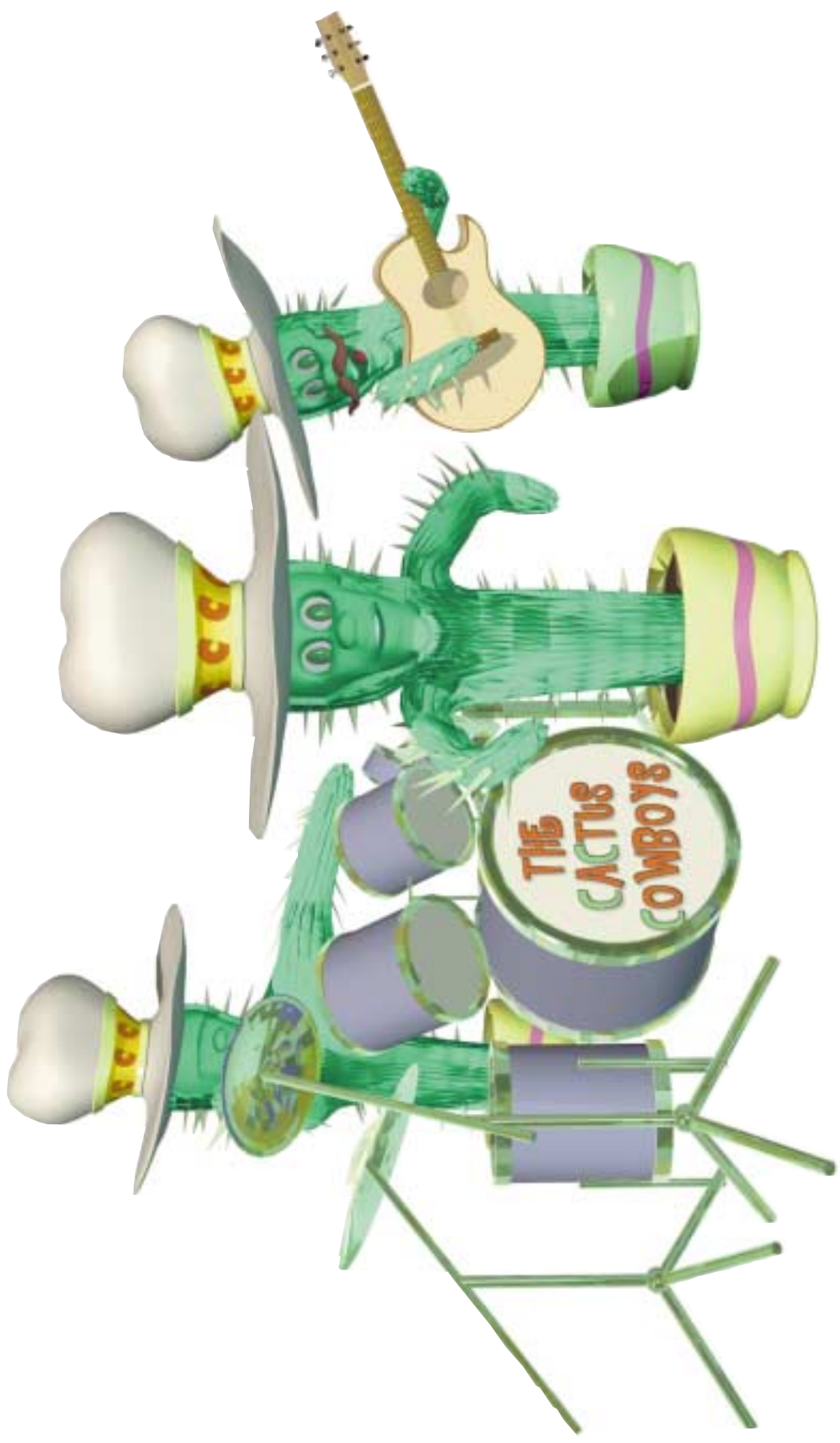
Students may also use the felt board simply for play and to concoct their own Letter TV stories. You can easily replace worn or lost pieces by returning to this Web site.

B

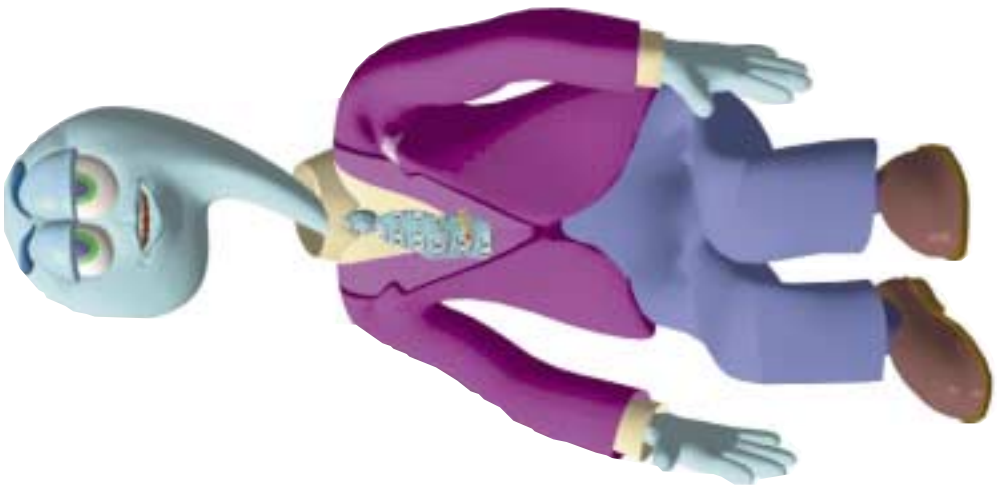
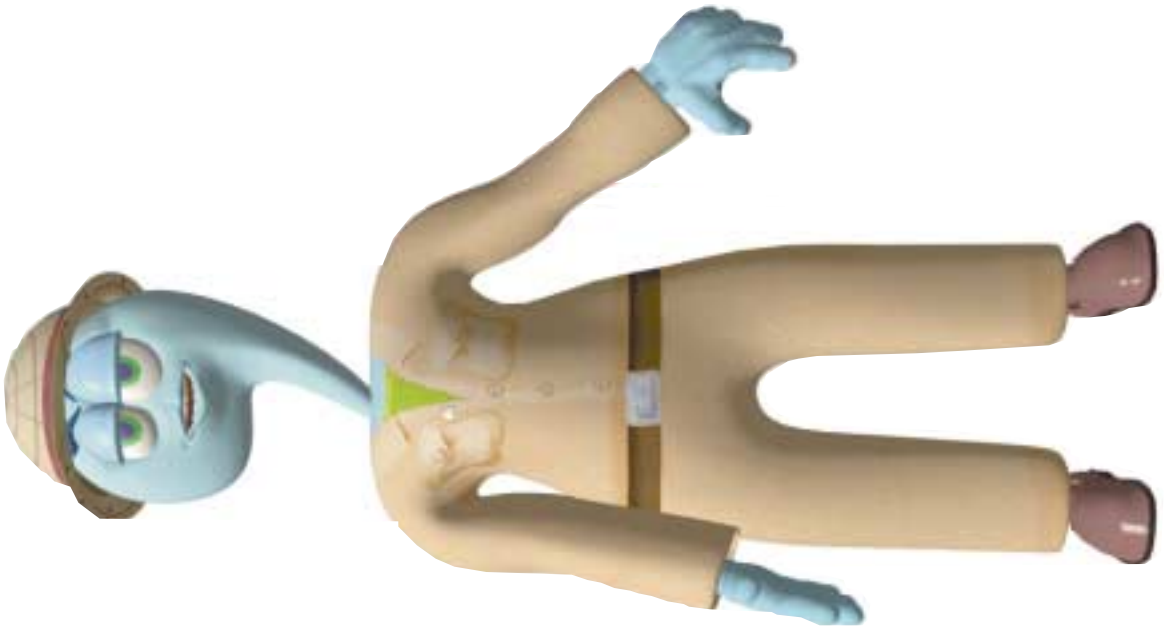


C











D





F



G





H





I



K



L

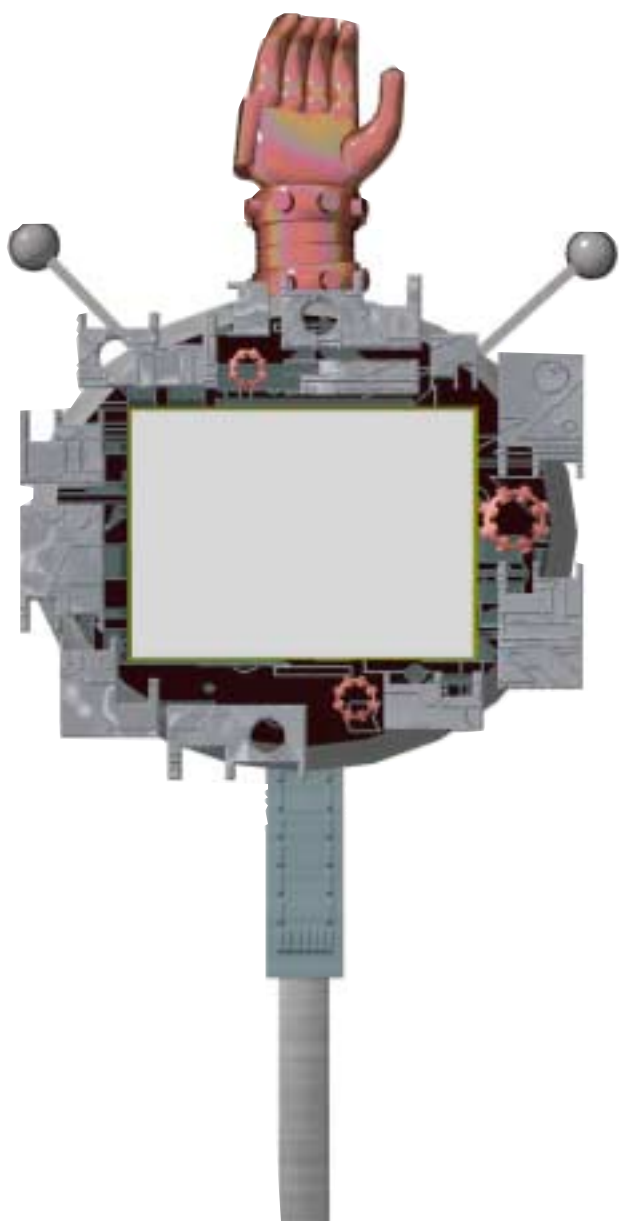


M



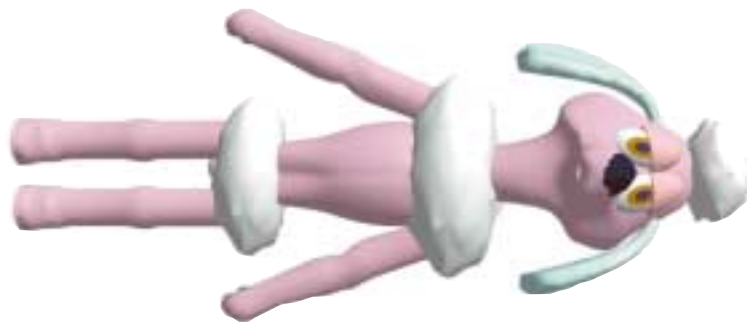


N

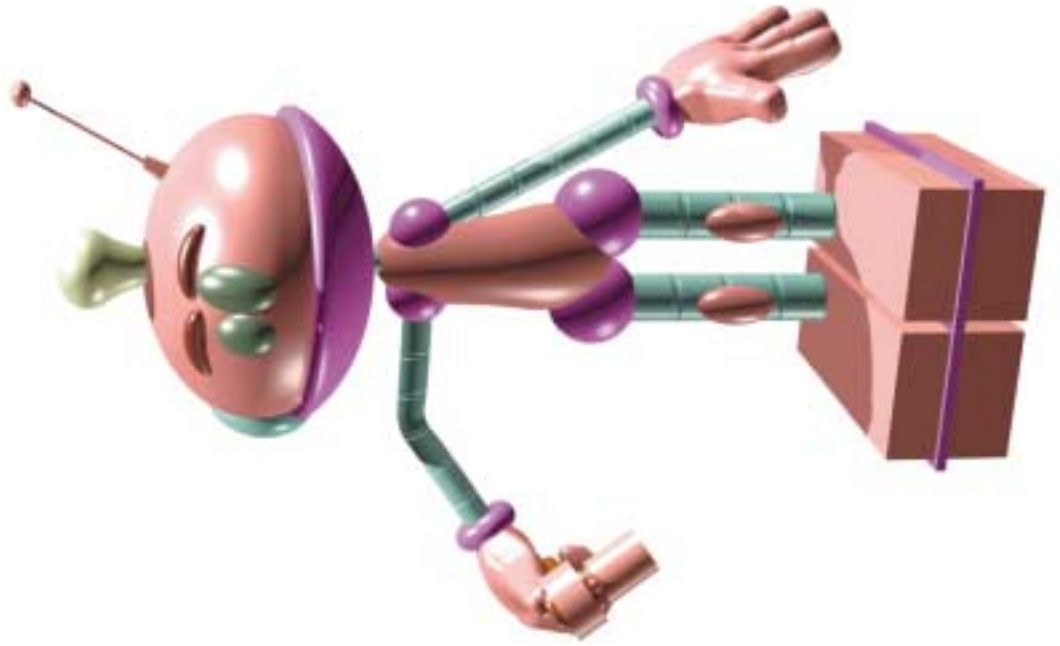




P

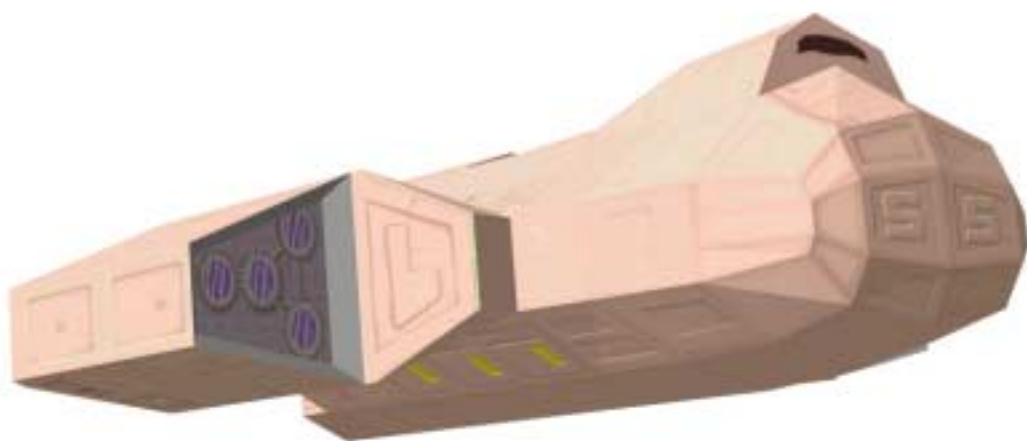


R

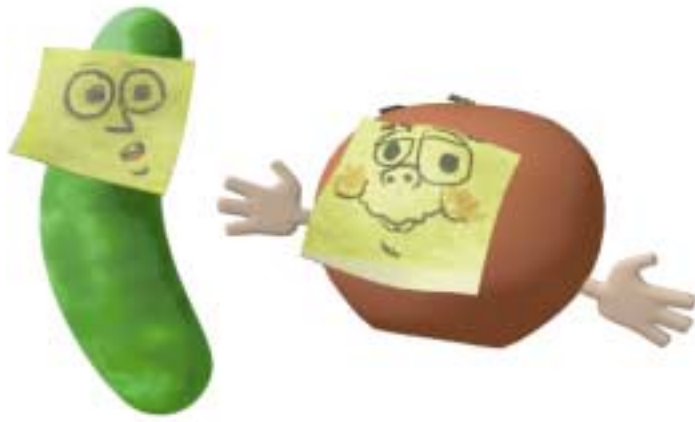


S





T



U



Z

